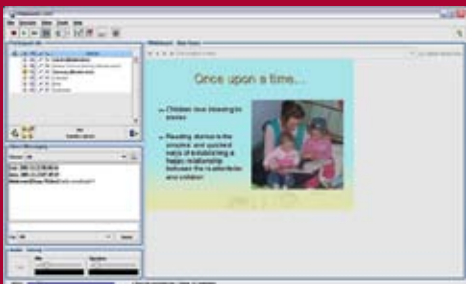


## STUDENT SUPPORT

Our training staff can be readily contacted by phone or email, and are easily accessible. In addition to seeing you each week in the classroom, our trainers will visit you at your work placement site.

*One World has a commitment to innovation, and has an extensive website that incorporates online learning and support. When you enroll into our program you will have access to your own MyWorld homepage via Learners World. You will have access to features such as chatrooms and instant messaging. When enrolling with One World you will not only participate in our innovative training program, you will also be a member of our online community of learners.*



**Winners of the Victorian Training Awards 2009  
"Small Training Provider of the Year Award"**



We welcome your enquiries regarding our specialised training



407-411 Thompson Road (off Kelly Court)  
North Geelong VIC 3215  
ABN: 21 076 297 400  
Telephone 5272 2714, Fax 5272 3039

[www.owfc.com.au](http://www.owfc.com.au)



ISO 9001:2008  
LIC 14255  
SAI GLOBAL



NATIONALLY RECOGNISED TRAINING  
CHC08 Community Services Training Package

## VTE in VCE Program

Competencies Working Towards

**CHC30708**

**Certificate III in Children's Services**



# Take a Peek

One World Training Services

Nationally Recognised  
Training Programs for the  
Children's Services Industry

**One World for Children Pty Ltd is a Registered Training Organisation (RTO) with the Victorian Qualifications Authority, and a provider of nationally recognised programs to the children's services industry.**

**One World for Children Pty Ltd is also registered to deliver Certificate III in Children's Services and has developed a stimulating and innovative program especially for VCE students who are considering a career in children's services.**



## AIMS

The aims of this program are to:

- provide access to a range of potential career paths within the Community Services industry
- provide training and skill development for the achievement of competence in areas such as casework, community development and advocacy.

Our childcare industry experience and specialised training programs provide an appropriate backdrop for contextualised learning.

Our program will therefore be of special interest to students interested in pursuing a career in childcare.

This program selected for VTE in the VCE provides entry level training for the community work sector of the industry.

This certificate of attainment provides an entrance for work in the industry as well as a basis for articulation with a higher level qualifications in Community Services.

## WORK PLACEMENT

Work placement is an appropriate component of all VCE/VTE programs. Participating in work placement enhances the acquisition of skills and knowledge, helps you to gain an understanding of the industry, and increases your work opportunities.

The Certificate III in Children's Services has both on-the-job and off-the-job components to the training and assessing of competencies.

The on-the-job component of the training program will be delivered through appropriate work placement in the children's services industry.

Using our industry networks we will organise and co-ordinate your placement in a childcare centre and provide the preparatory training required to ensure your successful transition into the work environment.

Ongoing support and guidance will be provided to you by our training staff, and visits during your work placement will be utilised for enhancing classroom learning, and assessing on-the-job competency.

## PROGRAM OUTLINE

Year 1	
Code	Title
CHCCN301A	Ensure the health and safety of children
CHCFC301A	Support the development of children
HLTOHS300A	Contribute to OHS processes
CHCCN302A	Provide care for children
CHCCN303A	Contribute to provision of nutritionally balanced food in a safe hygienic manner
HLTFA301B	Apply First Aid
Year 2	
Code	Title
CHCCHILD401C	Identify and respond to children and young people at risk
CHCCS400A	Work within a relevant legal and ethical framework
CHCIC301D	Interact effectively with children
CHCPR301A	Provide experiences to support children's play and learning
CHCPR303D	Develop an understanding of children's interests and developmental needs